

ROWAN



BETWEEN THE WARS CARDIGAN

By Lucy Jones

ROWEB-01838

v.1







BETWEEN THE WARS CARDIGAN

by Lucy Jones

Craft 

Skill Level 

ROWEB-01838 

v.1

[Click the image for a full screen, printable version](#)

SIZES

S	M	L	XL	XXL	
To fit bust					
81-86	91-97	102-107	112-117	122-127	cm
32-34	36-38	40-42	44-46	48-50	in

YARN

Pure Wool Superwash DK and Wool Cotton

A	B	C			
PW Enamel 013					
6	6	6	7	8	x 50gm
PW Port 037					
5	6	6	7	8	x 50gm
WCo S'Shape 955					
1	1	2	2	2	x 50gm

**More Yarn
Information**

on knitrowan.com

NEEDLES

1 pair 3¼mm (no 10) (US 3) needles

1 pair 4mm (no 8) (US 6) needles

BUTTONS - 8 x medium size green buttons.

TENSION

22 sts and 30 rows to 10 cm measured over st st using 4mm (US 6) needles.

24 sts and 60 rows to 10 cm measured over bodice patt, 21 sts and

38 rows to 10 cm measured over peplum patt, both using 3¼mm

(US 3) needles.

SPECIAL ABBREVIATIONS

sl 2 = slip 2 sts purlwise (see pattern note for bodice patt); **sl 3** = slip 3 sts purlwise (see pattern note for bodice patt).

Pattern note for peplum patt: The number of sts varies whilst working peplum patt and therefore sts should only be counted after patt rows 7 and 8. Before working shaping through patt, place markers one full patt rep (9 sts) in from ends of rows. Work sts beyond markers in g st and sts between markers in patt.

Pattern note for bodice patt: When working bodice patt, all sts should be slipped with yarn held at **WS** of work – this is back of work on RS rows, and front of work on WS rows.

BACK

Using 3¼mm (US 3) needles and yarn B cast on 102 [111: 120: 129: 147] sts.

Work in g st for 2 rows, ending with RS facing for next row.

Work in peplum patt as follows:

Row 1 (RS): K2, *yfwd, K8, yfwd, K1, rep from * to last st, K1.

Row 2: K3, *P8, K3, rep from * to end.

Row 3: K3, *yfwd, K8, yfwd, K3, rep from * to end.

Row 4: K4, *P8, K5, rep from * to last 12 sts, P8, K4.

Row 5: K4, *yfwd, K8, yfwd, K5, rep from * to last 12 sts, yfwd, K8, yfwd, K4.

Row 6: K5, *P8, K7, rep from * to last 13 sts, P8, K5.

Row 7: K5, *K4tog tbl, K4tog, K7, rep from * to last 13 sts, K4tog tbl, K4tog, K5.

Row 8: Knit.

These 8 rows form peplum patt.

Keeping patt correct (see pattern note for peplum patt), dec 1 st at each end of 7th and 7 foll 10th rows.

Work 3 rows, ending after patt row 8 and with RS facing for next row. 86 [95: 104: 113: 131] sts.

Peplum is now complete.

Next row (RS): K7 [2: 4: 4: 5], M1, (K12 [10: 8: 7: 8], M1) 6 [9: 12: 15: 15] times, K7 [3: 4: 4: 6]. 93 [105: 117: 129: 147] sts.

Next row: Purl.

Join in yarn A.

Now work in bodice patt as follows:

Row 1 (RS): Using yarn A K1, *sl 1 (see pattern note for bodice patt), K5, rep from * to last 2 sts, sl 1 (see pattern note for bodice patt), K1.

Row 2: Using yarn A P1, *sl 1 (see pattern note for bodice patt), P5, rep from * to last 2 sts, sl 1 (see pattern note for bodice patt), P1.

Row 3: Using yarn B K3, *sl 3 (see pattern note for bodice patt), K3, rep from * to end.

Row 4: Using yarn B P3, *sl 3 (see pattern note for bodice patt), P3, rep from * to end.

Row 5: Using yarn A K1, sl 2 (see pattern note for bodice patt), *K3, sl 3 (see pattern note for bodice patt), rep from * to last 6 sts, K3, sl 2 (see pattern note for bodice patt), K1.

Row 6: Using yarn A P1, sl 2 (see pattern note for bodice patt), *P3, sl 3 (see pattern note for bodice patt), rep from * to last 6 sts, P3, sl 2 (see pattern note for bodice patt), P1.

Row 7: Using yarn B K4, *sl 1 (see pattern note for bodice patt), K5, rep from * to last 5 sts, sl 1 (see pattern note for bodice patt), K4.

Row 8: Using yarn B P4, *sl 1 (see pattern note for bodice patt), P5, rep from * to last 5 sts, sl 1 (see pattern note for bodice patt), P4.

These 8 rows form bodice patt.

Cont in bodice patt, inc 1 st at each end of 3rd and 4 foll 20th rows, taking inc sts into patt.

103 [115: 127: 139: 157] sts.

Cont straight until back meas 43 [43: 43: 42: 42] cm, ending with RS facing for next row.

Shape armholes

Keeping patt correct, cast off 2 [3: 4: 5: 6] sts at beg of next 2 rows. 99 [109: 119: 129: 145] sts.

Dec 1 st at each end of next 3 [3: 5: 5: 7] rows, then on foll 3 [4: 4: 5: 6] alt rows, then on 3 [4: 4: 4: 5] foll 4th rows.

81 [87: 93: 101: 109] sts.

Cont straight until armhole meas 19 [20: 21: 22: 23] cm, ending with RS facing for next row.

Shape back neck

Next row (RS): Patt 28 [31: 33: 37: 40] sts and turn, leaving rem sts on a holder.

Work each side of neck separately.

Keeping patt correct, dec 1 st at neck edge of next 5 rows, ending with RS facing for next row. 23 [26: 28: 32: 35] sts.

Shape shoulder

Cast off 5 [6: 6: 7: 8] sts at beg of next and foll 2 alt rows **and at same time** dec 1 st at neck edge of next and foll 2 alt rows.

Work 1 row.

Cast off rem 5 [5: 7: 8: 8] sts.

With RS facing, slip centre 25 [25: 27: 27: 29] sts onto a holder, rejoin appropriate yarn and patt to end.

Complete to match first side, reversing shapings.

LEFT FRONT

Using 3¼mm (US 3) needles and yarn B cast on 48 [57: 57: 66: 75] sts. Work in g st for 2 rows, ending with RS facing for next row.

Work in peplum patt as given for back for 14 rows, ending with RS facing for next row.

Keeping patt correct (see pattern note for peplum patt), dec 1 st at beg of next and 7 foll 10th rows.

Work 3 rows, ending after patt row 8 and with RS facing for next row. 40 [49: 49: 58: 67] sts.

Peplum is now complete.

Next row (RS): K2 [6: 2: 5: 3], M1, (K6 [12: 5: 8: 10], M1) 6 [3: 9: 6: 6] times, K2 [7: 2: 5: 4]. 47 [53: 59: 65: 74] sts.

Next row: Purl.

Join in yarn A.

Now work in bodice patt as follows:

Row 1 (RS): Using yarn A K1, *sl 1, K5, rep from * to last 4 [4: 4: 4: 1] sts, (sl 1) 1 [1: 1: 1: 0] times, K3 [3: 3: 3: 1].

Row 2: Using yarn A P3 [3: 3: 3: 6], *sl 1, P5, rep from * to last 2 sts, sl 1, P1.

Row 3: Using yarn B K3, *sl 3, K3, rep from * to last 2 [2: 2: 2: 5] sts, (sl 1) 1 [1: 1: 1: 0] times, (sl 3) 0 [0: 0: 0: 1] times, K1 [1: 1: 1: 2].

Row 4: Using yarn B (P1, sl 1) 1 [1: 1: 1: 0] times, P3 [3: 3: 3: 2], *sl 3, P3, rep from * to end.

Row 5: Using yarn A K1, sl 2, *K3, sl 3, rep from * to last 2 [2: 2: 2: 5] sts, K2 [2: 2: 2: 3], (sl 1, K1) 0 [0: 0: 0: 1] times.

Row 6: Using yarn A P2 [2: 2: 2: 1], (sl 3) 1 [1: 1: 1: 0] times, (sl 1) 0 [0: 0: 0: 1] times, *P3, sl 3, rep from * to last 6 sts, P3, sl 2, P1.

Row 7: Using yarn B K4, *sl 1, K5, rep from * to last 1 [1: 1: 1: 4] sts, (sl 1) 0 [0: 0: 0: 1] times, K1 [1: 1: 1: 3].

Row 8: Using yarn B P6 [6: 6: 6: 3], *sl 1, P5, rep from * to last 5 sts, sl 1, P4.

These 8 rows form bodice patt.

Cont in bodice patt, inc 1 st at beg of 3rd and 4 foll 20th rows, taking inc sts into patt. 52 [58: 64: 70: 79] sts.

Cont straight until left front matches back to beg of armhole shaping, ending with RS facing for next row.

Shape armhole

Keeping patt correct, cast off 2 [3: 4: 5: 6] sts at beg of next row. 50 [55: 60: 65: 73] sts.

Work 1 row.

Dec 1 st at armhole edge of next 3 [3: 5: 5: 7] rows, then on foll 3 [4: 4: 5: 6] alt rows, then on 3 [4: 4: 4: 5] foll 4th rows.

41 [44: 47: 51: 55] sts.

Cont straight until 30 [30: 34: 34: 38] rows less have been worked than on back to beg of shoulder shaping, ending with RS facing for next row.

Shape front neck

Next row (RS): Patt 33 [36: 39: 43: 47] sts and turn, leaving rem 8 sts on a holder (for neckband).

Keeping patt correct, dec 1 st at neck edge of next 6 rows, then on foll 4 alt rows, then on 3 [3: 4: 4: 5] foll 4th rows.

20 [23: 25: 29: 32] sts.

Work 3 rows, ending with RS facing for next row.

Shape shoulder

Cast off 5 [6: 6: 7: 8] sts at beg of next and foll 2 alt rows.

Work 1 row.

Cast off rem 5 [5: 7: 8: 8] sts.

RIGHT FRONT

Using 3¼mm (US 3) needles and yarn B cast on 48 [57: 57: 66: 75] sts. Work in g st for 2 rows, ending with RS facing for next row.

Work in peplum patt as given for back for 14 rows, ending with RS facing for next row.

Keeping patt correct (see pattern note for peplum patt), dec 1 st at end of next and 7 foll 10th rows.

Work 3 rows, ending after patt row 8 and with RS facing for next row. 40 [49: 49: 58: 67] sts.

Peplum is now complete.

Next row (RS): K2 [6: 2: 5: 3], M1, (K6 [12: 5: 8: 10], M1) 6 [3: 9: 6: 6] times, K2 [7: 2: 5: 4]. 47 [53: 59: 65: 74] sts.

Next row: Purl.

Join in yarn A.

Now work in bodice patt as follows:

Row 1 (RS): Using yarn A K1 [1: 1: 1: 4], *sl 1, K5, rep from * to last 4 sts, sl 1, K3.

Row 2: Using yarn A P3, *sl 1, P5, rep from * to last 2 [2: 2: 2: 5] sts, sl 1, P1 [1: 1: 1: 4].

Row 3: Using yarn B (K1, sl 2) 0 [0: 0: 0: 1] times, K3, *sl 3, K3, rep from * to last 2 sts, sl 1, K1.

Row 4: Using yarn B P1, sl 1, P3, *sl 3, P3, rep from * to last 0 [0: 0: 0: 3] sts, (sl 2, P1) 0 [0: 0: 0: 1] times.

Row 5: Using yarn A (K1, sl 2) 1 [1: 1: 1: 0] times, *K3, sl 3, rep from * to last 2 sts, K2.

Row 6: Using yarn A P2, sl 3, *P3, sl 3, rep from * to last 6 [6: 6: 6: 3] sts, P3, (sl 2, P1) 1 [1: 1: 1: 0] times.

Row 7: Using yarn B K4 [4: 4: 4: 1], *sl 1, K5, rep from * to last st, K1.

Row 8: Using yarn B P6, *sl 1, P5, rep from * to last 5 [5: 5: 5: 2] sts, (sl 1) 1 [1: 1: 1: 0] times, P4 [4: 4: 4: 2].

These 8 rows form bodice patt.

Cont in bodice patt, inc 1 st at end of 3rd and 4 foll 20th rows, taking inc sts into patt. 52 [58: 64: 70: 79] sts.

Complete to match left front, reversing shapings and working first row of neck shaping as folls:

Shape front neck

Next row (RS): Patt 8 sts and slip these sts onto a holder (for neckband), patt to end. 33 [36: 39: 43: 47] sts.

SLEEVES

Using 3¼mm (US 3) needles and yarn C cast on 57 [62: 62: 62: 67] sts.

Row 1 (WS): P2, *K1, P1, K1, P2, rep from * to end.

Row 2: K2, *P3, K2, rep from * to end.

These 2 rows form fancy rib.

Cont in fancy rib, shaping sides by inc 1 st at each end of 10th [10th: 8th: 8th: 8th] and 0 [0: 1: 3: 3] foll 6th rows, then on 2 [2: 2: 0: 0] foll 8th rows, taking inc sts into patt. 63 [68: 70: 70: 75] sts.

Work 4 [4: 0: 4: 4] rows, ending with **WS** facing for next row.

Row 33 (WS): Rib 6 [4: 0: 0: 6], work 2 tog, (rib 1 [1: 2: 2: 1], work 2 tog) 16 [19: 17: 17: 20] times, rib 7 [5: 0: 0: 7].

46 [48: 52: 52: 54] sts.

Change to 4mm (US 6) needles.

Break off yarn C and join in yarn A.

Beg with a K row, now work in st st, shaping sides by inc 1 st at each end of 3rd [3rd: 7th: next: next] and every foll 8th [8th: 8th: 6th: 6th] row to 62 [72: 76: 64: 74] sts, then on every foll 10th [-: -: 8th: 8th] row until there are 68 [-: -: 80: 84] sts.

Cont straight until sleeve meas 44 [45: 46: 46: 46] cm, ending with RS facing for next row.

Shape top

Cast off 2 [3: 4: 5: 6] sts at beg of next 2 rows. 64 [66: 68: 70: 72] sts.

Dec 1 st at each end of next 3 rows, then on foll 5 alt rows, then on 3 foll 4th rows. 42 [44: 46: 48: 50] sts.

Work 1 row.

Dec 1 st at each end of next and every foll alt row until 36 sts rem, then on foll 9 rows, ending with RS facing for next row.

Cast off rem 18 sts.

MAKING UP

Press.

Join both shoulder seams using back stitch, or mattress stitch if preferred.

Neckband

With RS facing, using 3¼mm (US 3) needles and yarn A, K across 8 sts on right front holder, pick up and knit 16 [16: 18: 18: 20] sts up right side of front neck, and 7 sts down right side of back neck, K across 25 [25: 27: 27: 29] sts on back holder, then pick up and knit 7 sts up left side of back neck, and 16 [16: 18: 18: 20] sts down left side of front neck, then K across 8 sts on left front holder. 87 [87: 93: 93: 99] sts.

Work in g st for 2 rows, ending with **WS** facing for next row.

Cast off knitwise (on **WS**).

Button band

With RS facing, using 3¼mm (US 3) needles and yarn A, pick up and knit 129 [131: 131: 131: 133] sts evenly down left front opening edge, from top of neckband to cast-on edge.

Row 1 (WS): K1, P to last st, K1.

Row 2: Knit.

Rows 3 to 8: As rows 1 and 2, 3 times.

Row 9 (WS): Knit (to form fold line).

Row 10: As row 2.

Rows 11 to 16: As rows 1 and 2, 3 times.

Row 17: As row 1.

Cast off.

Buttonhole band

With RS facing, using 3¼mm (US 3) needles and yarn A, pick up and knit 129 [131: 131: 131: 133] sts evenly up right front opening edge, from cast-on edge to top of neckband.

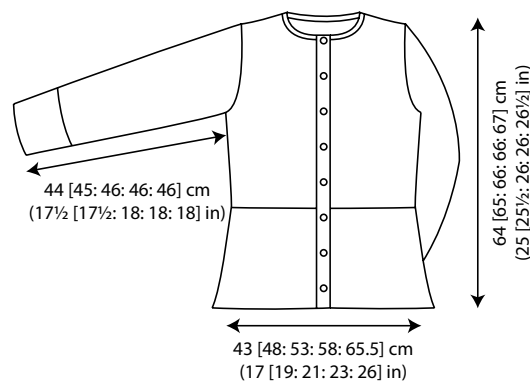
Work rows 1 to 17 as given for button band, making buttonholes in rows 4 and 14 as folls:

Buttonhole row (RS): K12 [14: 14: 14: 16], *K2tog, yfwd (to make a buttonhole), K14, rep from * 6 times more, K2tog, yfwd (to make 8th buttonhole), K3.

When all 17 rows have been completed, cast off.

Fold front bands in half to inside along fold line rows and neatly sew in place.

Set in sleeves using the set-in method.



[Click the image for a full screen, printable version](#)

Information
Pages